

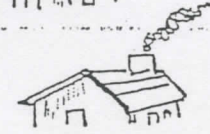


WIND SCALE.

WIND SPEED
MILES PER HOUR

SMOKE RISES UP

0



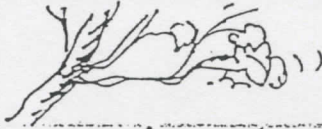
SMOKE DRIFTS

1-3



LEAVES RUSTLE
FLAGS STIR

4-7



LEAVES AND
TWIGS MOVE

8-12



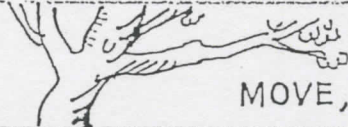
BRANCHES MOVE
FLAGS FLAP

13-18



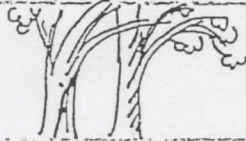
SMALL TREES SWAY
FLAGS RIPPLE

19-24



LARGE BRANCHES
MOVE, FLAGS BEAT

25-31



WHOLE TREES MOVE
FLAGS EXTEND

32-38



TWIGS BREAK
WALKING IS DIFFICULT

TROPICAL STORMS

39-46



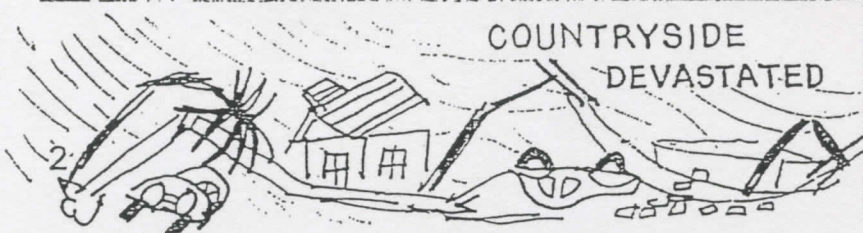
SIGNS, ANTENNAS
BLOWN DOWN

47-54



TREES UPROOTED
CONSIDERABLE
DAMAGE TO BUILDINGS

55-73



COUNTRYSIDE
DEVASTATED

HURRICANE

74 OR ABOVE

Light

Moderate

Heavy